

GEORGE & COMPANY

THE REGION'S PREMIER
BUSINESS BROKERAGE FIRM

MAIN STREET & MIDDLE MARKET LISTINGS



508-753-1400 • info@georgeandco.com • www.georgeandco.com

June 2019



Salon & Day Spa - Best in Class - Affluent Middlesex County

#15605 Middlesex County, MA - With exquisite design & furnishings throughout, this spacious salon offers a wide array of services from hair, nails, skin, eyelash extensions, waxing, skin treatments as well as massage. New treatment machine could easily add 25% or more to revenue during the next year. Well-trained staff is in place. If you're experienced with hair and day spa offerings and want to own a place of your own, this is the time and this is the place you want!

Gross Revenue: \$776,333

Cash Flow: \$199,256

Asking Price: \$385,000

Contact: Ron Ekstrom



Manufacturer & Distributor of Wood & Ceramic Products

#15604 Hampsted County, MA - Gift & Novelty Store Industry, Motivated Seller, Established 1999 with an excellent reputation, Consistent revenue, Renewable leased 6,525 facility (production, offices, storage), Strategically located in Central MA, 95% of sales are wholesale & 5% retail, Over 80% are repeat customers, More than 15 product lines, hundreds of designs, Includes state-of-the-art equipment to get the work done

Gross Revenue: \$1,210,059

Cash Flow: \$203,878

Asking Price: \$599,000

Contact: Tim Cavan



Commercial Telecommunications #15602

Worcester County, MA - Sales / Installation / Service

Long-established business with great reputation in industry. Company sells, installs, and services commercial telephone systems, loudspeaker paging systems, data networking hardware, and video surveillance systems.

Gross Revenue: \$689,669

Cash Flow: \$146,784

Asking Price: \$299,000

Contact: Tim Cavan



A Business in Demand, Home Health Care #15528

Worcester County, MA - Home Health Care is in great demand due to demographic changes. This company is CHAP certified and licensed for Medicare and Medicaid clients. A well-equipped leased management office is centrally located to service most of Central & Eastern Massachusetts. Established in 2014 - Partners have divergent business interests. There is a great interest in this sector. Act fast as this business niche is in great demand.

Gross Revenue: \$1,514,916

Cash Flow: \$354,341

Asking Price: \$1,350,000

Contact: Jeff Lefebvre



Bakery / Deli / Catering #15546

Worcester County, MA - Well-Established, Well-Known, Well-Loved. Best describes this landmark in Worcester County. Bakery & Deli with a very loyal customer base that goes back generations. Staff & Management is in place as well as a favorable, long-term lease. All that's currently needed is A NEW OWNER, our client wishes to retire.

Gross Revenue: \$1,059,542

Cash Flow: \$175,827

Asking Price: \$299,000

Contact: Ron Ekstrom



Outdoor Recreational Equipment Installation & Maintenance Contractor #15596

Worcester County, MA - Strong Market Demand & Growth Opportunity

Site survey, design, installation & maintenance services for outdoor recreational equipment of all types, as well as landscaping & snow plowing. Business can be run from home or office with space for truck & trailer parking. Well-developed web site draws clients regionally throughout Central MA & Metro West.

Gross Revenue: \$400,000

Cash Flow: \$100,000

Asking Price: \$195,000

Contact: Jeff Lefebvre



Pizza in Norfolk County Great Numbers #15556

Norfolk County, MA - This business been successfully operating in the Norfolk County area for 3 years under present owners, but has been an established pizza restaurant since 2005. They serve a variety of pizzas, grinders, wraps, calzones, chicken, salads, dinners and appetizers. They offer the choice of dining-in, take out, delivery and catering services.

Gross Revenue: \$737,249

Cash Flow: N/A

Asking Price: \$310,000

Contact: Myles McAlpine



Auto Repair – Independent Shop – Great Opportunity #15589

Worcester, MA - Established for 20+ years in Central MA the owner has built & maintained a loyal customer base. 2,700 sq. ft. facility with a favorable, long-term lease. Approx. \$50k in equipment that's included in asking price. Seller training for 1 month & possible consulting beyond. Skilled employees, Customer friendly & informative website, visible location with average daily traffic of 13,000.

Gross Revenue: \$670,368

Cash Flow: \$105,987

Asking Price: \$125,000

Contact: Jesse Ritz



Price Reduced! 50% Seller Financing #15587

Norfolk County, MA - Great college town in a high-traffic location. Business resides in a building that has seen a multi-million renovation. Current owner invested over \$350,000 in renovations, build-out, equipment, etc. This is a turn-key business that is very profitable and has tremendous growth potential because it's a 6-day operation, currently closed on Sundays! Add a day, expand the hours and watch the revenue grow! Owner selling to focus on other business.

Gross Revenue: \$583,799

Cash Flow: \$193,895

Asking Price: \$249,000

Contact: Ron Ekstrom



Club / Bar / Restaurant #15593

Strafford County, NH - - Located in a thriving NH coast town, close to colleges. Long-term lease in place. 8,000 square feet with occupancy of 203. Plenty of parking. Excellent Management & Accounting. Up to \$150,000 Owner Financing Possible. OFFERS ARE INVITED!

Gross Revenue: \$800,000

Cash Flow: \$200,000

Asking Price: \$499,000

Contact: Bob Donaldson



Convenience Store Close to CT Casino #15598

New London County, CT - Clean, well-maintained 2,000 SF Convenience Store with plenty of parking has everything for their customers: Post Office & Western Union, Shipping & Stamps, Money Orders, Bill Pay, ATM, as well as the usual CV items of Tobacco Products, Lottery, Coffee, Cold Drinks, Dry Goods. Traffic count of over 18,000 vehicles per day (close to Foxwoods) this store has great growth potential. Favorable renewable lease is in place.

Gross Revenue: \$864,839
Cash Flow: \$63,971

Asking Price: \$150,000
Contact: Jeff Lefebvre



Well-Known Tutoring #15595

Worcester County, MA - Nationally and Internationally recognized tutoring service with a good reputation and BBB A+ rating. Seller wishes to retire after 20 years. Licensed staff is in place. 2,700 square foot location is owned by Seller, who is offering a long-term lease. Corporate provides training, support materials as well as advertising.

Gross Revenue: \$248,167
Cash Flow: \$74,629

Asking Price: \$149,999
Contact: Tim Cavan



Machining Job Shop serving Blow Mold Industry #15547

Worcester County - Independently owned & operated business that specializes in services supporting the Plastics Industry. A solid platform that a buyer can expand. Employees in place that manage the day-to-day operations. Seller willing to train & help transition the business, industry experience is helpful but, not mandatory.

Gross Revenue: \$739,000
Cash Flow: \$186,000

Asking Price: \$600,000
Contact: Doug Pendleton



Pet Grooming Business / Real Estate / All Equipment #15567

Northern Worcester County, MA - Great Doggy-Deal, Great opportunity to get into your own pet grooming business. Established & Profitable, Loyal client list, Estimated Gross Sales \$100,000 per year.

Gross Revenue: \$90,557
Cash Flow: \$73,126

Asking Price: \$190,000
Contact: Jesse Ritz



Family Friendly Nature Space #15584

MA - Our clients are the original founders, of this extremely unique nature conservatory & tropical garden in MA and are looking to retire after 19 years. The 18,000 square foot facility is located on 5 acres. Includes a gift shop, food court and outdoor garden. This business offers an exceptional venue for special events, such as weddings, birthdays and other functions (business does have liquor license). The asking price of \$3,950,000 includes the Business / Inventory / FF&E and Real Estate.

Gross Revenue: \$1,500,000
Cash Flow: \$400,000

Asking Price: \$3,950,000
Contact: Craig Miller



Music & Dance Club #15590

Worcester County, MA - This is your chance to own a Music & Dance Club with the Best Dance Floor in the Area! Motivated Seller / Priced for A Fast Sale. Great Worcester Location with Parking. 7,000 square foot / Long-Term Lease. So Much Potential!

Gross Revenue: Approx \$300,000
Cash Flow: N/A

Asking Price: \$79,000
Contact: Lori Jacobson



Excavating & Foundations #15579

Worcester County, MA - Established 15+ years / 50% of revenue is from recurring customers. Great reputation with Home Improvement Contractors. Equipment & Staff in place. Seller will remain as needed for smooth transition. Industry promises continued growth. Company leases office space from unrelated entity and rents yard space from owner owned entity. Great Opportunity for an Individual Buyer or a Developer.

Gross Revenue: \$1,381,514
Cash Flow: \$349,654

Asking Price: Offers Invited
Contact: Ron Kirwood



Long Established Restaurant Equipment Dealer #15564

Worcester County, MA - Centrally located in the metro-west area. Belongs to a major restaurant equipment buying group and has a loyal customer base located through-out the New England area. Turnkey and located in a 30,000 s.f. facility which includes a 10,000 s.f. showroom of equipment and supplies. Their extensive inventory is included in the asking price.

Gross Revenue: \$4,050,451
Cash Flow: \$288,340

Asking Price: \$1,400,000
Contact: Jeff Lefebvre



Grow Vegetables, Flowers or Whatever You'd Like #15554

MA - 12+ Acres - Renovated Residential Home - Commercial Greenhouse. Established as a farm in the 1980's, Seller has invested over \$2M in the purchase of the property, updates & renovations to the home, land and greenhouse. Includes a beautifully renovated 3 bedroom/2.5 bath home (2,750 sf) & a 2-car garage with bonus room above! Greenhouse is 36,000 sf gutter connected glass structure. Automated, heated & fully protected for year-round growing.

Gross Revenue: N/A
Cash Flow: N/A

Asking Price: \$1,499,000
Contact: Lori Jacobson



Be Your Own Boss - Valuing Assets Business - Relocatable #15566

Worcester County, MA - This is a relocatable / work at home business. Appraisals of personal property, equipment, inventory. Seller is willing to train! Projected 2018 Sales is \$130,000. Projected 2018 Cash Flow is \$91,500.

Gross Revenue: \$130,000
Cash Flow: \$91,500

Asking Price: \$250,000
Contact: Phil Dotten



Lumber & Home Building Supply #15539

Grafton County, NH - Established for over 15 years, well-known and respected for their huge selection of building materials, salvage items & discontinued items. FF&E includes racking, store shelving, office equipment as well as boom truck, box truck, 3 flatbed trucks and 4 forklifts.

Gross Revenue: \$1,500,000
Cash Flow: \$144,000

Asking Price: \$399,000
Contact: Phil Dotten



Small Convenience Store with BIG POTENTIAL #15592

Worcester, MA - Great Worcester Location this Convenience Store is ready to GROW! Beer & Wine License in hand but not fully launched. Smoke Shop (loose tobacco, e-cigs, vapes, glass pipes, humidor). Lottery Commissions Approximately \$30k. 1,600 s.f. renewable, reasonable leased location in a well-maintained strip mall with plenty of off-street parking. Selling due to health, seller will provide training and possibly some Seller Financing for a well-qualified buyer.

Gross Revenue: N/A
Cash Flow: N/A

Asking Price: \$59,000
Contact: Jesse Ritz



Established & Profitable Tanning Salon in Worcester #15517

Central MA - State-of-the-art tanning salon in Worcester, MA. Established in 2004, they have won several consecutive "Best of Worcester" awards throughout the years. This salon provides their HUGE client list a combination of custom stand up booths, high pressure, high performance beds as well as Mystic Spray Tan & custom Airbrush systems.

Gross Revenue: \$325,286
Cash Flow: \$133,535

Asking Price: \$199,999
Contact: Tim Cavan



Fine Italian Dining in Worcester County #15452

Central MA - This remodeled Italian Restaurant has all the bells & whistles: exquisite finishes & furnishings, huge modern kitchen and a staff in place. 4,500 sf leased location with parking. Sales are approximately \$800k+. Great Opportunity!

Gross Revenue: \$780,000
Cash Flow: \$129,850

Asking Price: \$225,000
Contact: Lori Jacobson



Own A Pizza Parlor #15555

Worcester, MA - Projected Sales \$350,000+. Eat In - Take Out - Delivery. Motivated Seller / Some Seller Financing. Established Location Long-Term Lease. 1,200 sq. ft. Stand-Alone building with off street parking.

Gross Revenue: \$356,000
Cash Flow: TBD

Asking Price: \$95,000
Contact: Jesse Ritz



Own Restaurant with Real Estate Under \$300k #15582

Worcester County, MA - Motivated Seller, Gross Sales \$300,000+, Possibly Some Seller Financing, 4,300 sq. ft. Stand-Alone Building with Parking (on just under an acre), Full Pouring Liquor License, Dinner Only 5 Days Per Week, Seller Works 25 Hours Per Week, Great Opportunity with Growth Potential

Gross Revenue: \$311,622
Cash Flow: N/A

Asking Price: \$298,000
Contact: Jesse Ritz



Profitable Painting Business #15585

Middlesex County, MA - Middlesex / Essex / Norfolk Counties
Owner Operated. Established in 2009 - Home Based / Relocatable. Seller wishes to retire, supports training & will offer some financing to a well-qualified buyer.

Gross Revenue: \$700,000
Cash Flow: \$120,000

Asking Price: \$225,000
Contact: Jesse Ritz



Landscape & Construction Related Business #15551

Worcester County - Seller has worked part-time in this business. Recurring revenues for supplies & service. Leads are generated by word of mouth and vendors. Training & transition available from Seller

Gross Revenue: \$553,789
Cash Flow: \$120,000

Asking Price: \$280,000
Contact: Doug Pendleton



Own A Fitness Center for \$89,000 #15536

Worcester, MA - If you work out daily, are a people person, enjoy challenges & love to help people achieve their goals. Furniture/Fixtures/Equipment is included in asking price. 2,300 sf renovated, leased city location with parking. 8+ part-time trainers in place. Loyal clients & space to grow.

Gross Revenue: \$165,000
Cash Flow: \$55,000+/-

Asking Price: \$89,000
Contact: Lori Jacobson



State-of-the-Art CNC Machining #15550

Hampshire County - Hi-end machining for a client base involving aerospace, government work, military contractors and other large industrial companies. They have a very experienced staff and machinery that is recent, updated and relevant to deliver results others can't. There is capability to expand to another structure on the property and more than double production.

Gross Revenue: \$1,030,326
Cash Flow: \$207,226

Asking Price: \$1,050,000
Contact: Ron Ekstrom



Great Catering Opportunity! #15552

Worcester County, MA - A well-known and respected in Worcester County and provide an affordable menu for their corporate and casual clients. Our client wishes to head towards retirement but will consider staying on after a "training period" if new owner wants to take this business to its next level, which could easily double sales. Included in the asking price are 2 vehicles and all equipment.

Gross Revenue: \$466,361
Cash Flow: \$113,621

Asking Price: \$175,000
Contact: Jesse Ritz



Business-Friendly Community Convenience Store #15572

Bristol County, MA - Revitalized down-town with retail, professional/medical offices, and restaurants assist in the great foot & vehicle traffic. This business is in a building with a long-term, affordable lease. There has been a convenience store at this location for over 65 years. Store offers grocery, lottery, tobacco, salads, fresh subs and deli meat to their loyal customers.

Gross Revenue: \$225,000
Cash Flow: N/A

Asking Price: \$ 99,900
Contact: Myles McAlpine



Hair Replacement/Restoration in New England #15511

New England - Serving clients throughout New England, our client has been in this business for almost 50 years and wishes to retire. Current owner owns the building and is offering a long-term lease for the 2,000-sf facility.

Gross Revenue: \$275,000
Cash Flow: \$111,000

Asking Price: \$149,000
Contact: Greg Lano



This Is the Salon You Want #15532

Middlesex County - Upscale, Full-Service Salon offers quality hair, nails and waxing services. The Salon team is in place, a new owner could be absentee, behind a chair or managing this beautifully designed 1,300 sq. ft. leased salon. Located in Northern Central MA in a recently updated plaza with great visibility. There is still space to grow.

Gross Revenue: \$500,000
Cash Flow: \$115,000

Asking Price: \$159,000
Contact: Lori Jacobson



Fence/Deck Sales/Installations #15460

NH - Well-Established Commercial & Residential. Fence/Deck Sales & Installation. Great Opportunity - Serving MA & NH Seacoast. Sales Growth Every Year Since 2014. 2 Strategically Placed Locations. Management - Team - Sub Contractors & Equipment IN PLACE

Gross Revenue: \$1,800,000
Cash Flow: \$250,000

Asking Price: \$399,000
Contact: Phil Dotten



Catering Business in Windham County, CT #15583

Windham County, CT - Elegant weddings to backyard barbecues and every venue in between. Business hold a liquor license. Business includes all equipment including 4 vehicles. Real Estate that is set up for business success is offered for additional \$275,000

Gross Revenue: \$543,000
Cash Flow: \$198,000

Asking Price: \$295,000
Contact: Jeff Lefebvre



CT 9-Hole Public Golf Course – All Included #15476

Litchfield County, CT - How often are you going to get the chance to buy a golf course? Don't Miss Out: 9-Hole Public Course, 5,500 sf. Renovated Clubhouse (Bar, Restaurant, Banquet), 1,700 sf. Maintenance Building, 100+ Acres, Pro-Shop, Practice Range, Seller Wishes to Retire, Growth Potential.

Gross Revenue: \$990,000
Cash Flow: N/A

Asking Price: Make an Offer
Contact: Craig Miller



Major Growth Potential #15533

Middlesex County - From ice-cream to full restaurant. This seasonal ice-cream stand in a great location can easily be transformed into a fantastic year-round restaurant. Bring your ideas & make it your own! Fast Food / Breakfast & Lunch

Gross Revenue: \$150,000
Cash Flow: \$25,000

Asking Price: \$79,000
Contact: Lori Jacobson



Garden Center with Real Estate #15522

Worcester County - Garden Center in Worcester County could be purchased to continue as a garden center or for the real estate and make it what you want! Garden Center currently family run grossing \$500,000. Steel building on a slab is expandable & dividable on a level lot with public water/sewer. Established in 1950's this building has a drive-in door / loading dock and is classified as Commercial GB. Real Estate is being offered for an additional \$300,000

Gross Revenue: \$596,000
Cash Flow: N/A

Asking Price: \$99,000
Contact: Jesse Ritz



Flag Poles & Signs Sales/Installation/Maintenance #15531

Middlesex County - This profitable sign and flag pole business sells, installs and services only the leading products for their diverse client base of both residential and commercial customers. The owner of over 25 years currently operates this business out of his home and has proven to be of the top in its market.

Gross Revenue: \$306,801
Cash Flow: \$245,506

Asking Price: \$320,000
Contact: Bob Donaldson



Pizza Average \$12k per week = Motivated Seller #15549

Worcester County - Eat In, Take Out, Delivery. College within walking distance. Average weekly sales \$12,000. Reasonable, renewable lease. Stand-Alone building with own off-street parking. Does catering. This has everything in place to be a GREAT MONEY MAKER

Gross Revenue: \$650,000

Cash Flow: N/A

Asking Price: \$100,000

Contact: Jesse Ritz



NY Style Pizza in NH #15558

Hillsborough County, NH - This NY Style Pizza, Roast Beef and Sub Shop is in a high traffic, desirable location with plenty of free parking in Hillsborough County, NH. Averaging an estimated \$18,000 to \$20,000 per week in a clean, updated decor with seating for 30.

Gross Revenue: \$1,040,000

Cash Flow: TBD

Asking Price: \$325,000

Contact: Wayne Andrews



Power Equipment Sales/Service #15534

Middlesex County - This is a full-service power equipment shop, sales and service of lawn mowers, snow blowers, saws, as well as other misc. lawn & garden equipment. Great location on a main road, Seller is offering a long-term lease with possibly some seller financing for a well-qualified buyer.

Gross Revenue: \$1,250,000

Cash Flow: \$170,000

Asking Price: \$350,000

Contact: Lori Jacobson



Great Opportunity – Everything Included #15523

Worcester County - Our client wishes to retire and is including the real estate as well as all equipment & inventory of his Painting & Wallpapering Co. This could be a great investment for a current painter or for anyone that is looking to be their own boss.

Asking Price: \$199,000 Includes building, land, inventory & equipment

Contact: Jesse Ritz



Strong Retail NOT Affected By Internet #15515

Worcester County - Home, Farm, Garden & Pet Supplies. Economy does not impact this industry. Continuously growing & maintaining profitable sales. Sales are well diversified with no one category being the driving force. This business model has stood the test of time. Offering quality & value as well as superb customer service. This business has a very loyal, returning customer base.

Gross Revenue: \$1,986,665

Cash Flow: \$307,320

Asking Price: \$749,000

Contact: Phil Dotten



Discount Retail Store – Price Drop – Central MA #15366

Central MA - Discount Retail Store that carries a wide range of inexpensive items – brand name & private label – for your car, pet, household, personal care.

Gross Revenue: \$220,000
Cash Flow: \$75,000

Asking Price: \$79,000
Contact: Lori Jacobson



Convenience Store with Beer & Wine #15599 Worcester County, MA - Well-established Convenience Store located in the center of a working-class neighborhood with both off-street and street parking. Open 6 am - 11 pm 7 days/ week. Seller June finance a qualified buyer with good credit & experience as well as offer a long-term lease with option to buy the real property. Beer & Wine Sales = 30% Tobacco Products = 35% Dry Goods = 35%

Gross Revenue: \$778,549
Cash Flow: \$155,911

Asking Price: \$175,000
Contact: Jeff Lefebvre



UNDER AGREEMENT – Award Winning Spa #155032

Hampshire County, MA - Well-established, turn-key, profitable relaxation destination that draws clientele from local and regional New England, including eastern NY state. Featuring private hot tub rooms, infrared saunas, steam room, and a team of experienced Licensed Massage Therapists for individuals and couples' massage and spa services, serving both women and men.

Gross Revenue: \$1,000,000
Cash Flow: \$250,000

Asking Price: \$550,000 For Business
Contact: Craig Miller



UNDER AGREEMENT – Niche Manufacturing Business #15591

The Enterprise Value is anticipated to be in the range of \$10 Million. One of the most profitable companies we've listed for quite some time. The Business is located near Boston Massachusetts. There is management in place running most of the day-to-day. The Seller is open to staying on until his role can be replicated. Their clients range from small firms to Fortune 500 companies. The business could be a good fit for a strategic or a financial Buyer.

Gross Revenue: \$10.7 Million
Cash Flow: \$2.5 Million

Asking Price: N/A
Contact: Doug Pendleton



UNDER AGREEMENT – HVAC Cash Flow \$671k #15540

Norfolk County - Serving Residential & Light Commercial Customers. Established business for over 25 years. Management Team in place. Over 4,000 repeat customers. Recession resistant business. SBA financing with as little down as \$200,000. Seller willing to train & help transition the business. Industry experience helpful but not required.

Gross Revenue: \$2,200,000
Cash Flow: \$671,000

Asking Price: \$2,000,000
Contact: Doug Pendleton



UNDER AGREEMENT - Cafe & So Much More in Plymouth County #15573

Plymouth County, MA - Serving breakfast & lunch, coffee all day as well as craft beer & wine and merchandise. Fully renovated in 2014, this cafe has a recurring customer rate of 58%. Located in a desirable location with a great long-term lease. With all that is offered there is still room for growth and make it your own.

Gross Revenue: \$521,149
Cash Flow: \$98,113

Asking Price: \$277,000
Contact: Myles McAlpine



UNDER AGREEMENT - Childcare Center in Middlesex County #15543

Middlesex County - Licensed for 39 children with a solid staff that has been there for years makes this a truly turn-key operation. Established & Respected in a great location that has quick and easy access for parents dropping off & picking up. This is an attractive daycare that you will want to take a look at - there is expansion ability if wanted.

Gross Revenue: \$365,996
Cash Flow: \$57,884

Asking Price: \$139,000
Contact: Ron Ekstrom



UNDER AGREEMENT - Debt Collection Law Firm #15568

Worcester County, MA - A prestigious firm that has assisted many commercial, retail, medical and professional clients with all aspects of debt collection. Included in the asking price is the 2,300 s.f. office/condo, with 11 private offices, common area with work stations, conference room and kitchenette.

Gross Revenue: \$3,500,000
Cash Flow: \$417,000

Asking Price: \$1,200,000
Contact: TBD



UNDER AGREEMENT - Buy 1 Get 3 Free in Worcester County #15578

Worcester County, MA - Buy the Land (4+ acres) for \$699,000. Essentially Get; Full-Service Established Restaurant, Catering Business (Together Restaurant & Catering Gross over \$1.5M), and 12 Room Motel that generates \$75k+/- . Motivated Seller wants to Retire & Travel ASAP (Includes: Real Estate, Business, Furniture, Fixtures & Equipment) (Plus Inventory).

Gross Revenue: \$1,500,000
Cash Flow: \$175,000

Asking Price: \$699,000
Contact: Lori Jacobson



UNDER AGREEMENT - Custom Metal Fabricators - HVAC Industry #15500

Worcester County, MA - Commercial & industrial centrally located, serving Central New England engineering, service, fabrication, and installation. Absentee owner. Building available for lease or purchase.

Gross Revenue: \$748,000
Cash Flow: \$140,000

Asking Price: \$375,000
Contact: Doug Pendleton



UNDER AGREEMENT - Absentee Run Child Daycare #15565

Plymouth County, MA - This daycare is absolutely run absentee and is totally turn-key. Two directors lead this facility that is fully staffed with ownership spending not much more than 5 to 10 hours a month with reviewing reports or visiting the facility.

Gross Revenue: \$829,075

Cash Flow: \$213,046

Asking Price: \$449,000

Contact: Ron Ekstrom



SOLD - Non-Medical Home Care Service #15494

MA - Just the right size business offering customized high quality & compassionate care for the elderly and disabled for 11 years. Currently there are approximately 25 caregivers for the current service areas of Worcester & Middlesex County as well as south central New Hampshire.

Gross Revenue: \$548,485

Cash Flow: \$148,551

Asking Price: \$345,000

Contact: Jeff Lefebvre



SOLD - Middlesex County Italian Restaurant #15502

Middlesex County - Beautiful space consists of 4,000 sf on first floor which features. Full Bar, Dining Room, Open Kitchen & Rest Rooms, the basement houses offices & storage. Guest capacity of 130, full liquor license, and ample parking.

Gross Revenue: \$1,730,000

Cash Flow: \$165,000

Asking Price: \$299,000

Contact: Lori Jacobson



SOLD - Assisted Care Living Management & Staff in Place #15537

Central, MA - Provides residents with a bed & breakfast like setting & atmosphere. Residents are supported 24-7 by medical management, direct care / daily living activities, and many other forms of day to day quality care administered and supervised by a highly skilled and trained staff.

Gross Revenue: \$1,180,000

Cash Flow: \$624,000

Asking Price: \$4,000,000

Contact: Chip Emerson



SOLD - Not Just A Pizza Place #15560

Worcester County, MA - This casual restaurant offers a diverse menu and prepares meals from scratch giving their customers that "home made" appeal. Various pizza & grinders, burgers, wraps, salads and mac & cheese are all on the menu. Completely renovated inside and out. The real estate is being sold along with the business for an additional price.

Gross Revenue: \$952,206

Cash Flow: \$152,017

Asking Price: \$195,000

Contact: Ron Ekstrom



SOLD - Successful Middlesex Garden Center #15474

Middlesex County, MA - Plenty of Opportunity For Expansion! This well established business offers the community the finest garden center products.

Gross Revenue: \$800,000
Cash Flow: \$88,500

Asking Price: \$299,000
Contact: Phil Dotten

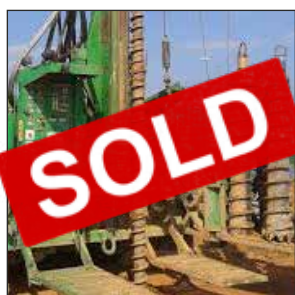


SOLD - CT Liquor Store Over \$2,100,000 In Sales! #15416

CT - Located in a growing commercial area, Absentee run with management in place. Significant upside possible with the right experienced liquor retailer.

Gross Revenue: \$2,150,149
Cash Flow: \$253,018

Asking Price: \$950,000
Contact: Jeff Lefebvre



SOLD - Geotechnical & Environmental Drilling Company #15357

Worcester County - New England company that are experts in geotechnical & environmental drilling. In business for 40+ years, great crew & large diversified equipment fleet. Sales 2M+. Make An Offer!

Gross Revenue: \$2,328,965
Cash Flow: \$508,619

Asking Price: Offers invited
Contact: Ron Kirwood



SOLD - Assisted Living - Great Business Opportunity #15541

Norfolk County - You don't have to be in a Medical Profession to own! Easy to Run / Easy to Own. This beautiful, totally renovated assisted living home is located in suburban Massachusetts. Management is in place as well as a fully trained staff making this truly a turn-key opportunity.

Gross Revenue: \$1,059,532
Cash Flow: \$417,101

Asking Price: \$1,995,000
Contact: Ronald Ekstrom



SOLD - Rapidly Growing Insulation Company #15535

Bristol County - Residential & Commercial Insulation Installation Company. Incredible margins in a growing space that has no end in sight. Staff, Management & Equipment is all in place. Seller owns 3 companies. Company has potential to double or triple in volume with further investment in people and geographic expansion

Gross Revenue: \$3,900,000
Cash Flow: \$1,512,942

Asking Price: \$4,500,000
Contact: Ron Ekstrom



SOLD - Established Auto Repair in Worcester #15394

Worcester County - Fully equipped shop does repairs, maintenance and inspection stickers. 3,489 sq. ft. with 5 bays & overheads. Seller owns building and will lease with option to buy. Being in the industry for 25+ years, Seller wishes to retire. Highly visible city location. National Franchise - Strong & growing market recognition & support.

Gross Revenue: \$750,566
Cash Flow: \$94,084

Asking Price: \$229,000
Contact: Jeff Lefebvre



SOLD - Established & Profitable Restaurant #15509

Worcester County, MA - Casual restaurant with full bar in northern Worcester County. Revenue - \$1M+ with Cashflow - \$100K+ consistent increases year after year. Seating for 24, ample parking and a great location. This restaurant receives great reviews on social media.

Gross Revenue: \$1,274,755
Cash Flow: \$121,941

Asking Price: \$329,900
Contact: Tim Cavan



SOLD - Real Estate Appraisal #15524

Worcester County - Profitable, stable business that specializes in residential real estate valuations for homeowners, RE brokers, financial institutions, government agencies, and attorney's. Can be relocated & operated from anywhere because the staff primarily works remotely. Currently in position to handle growth

Gross Revenue: \$742,000
Cash Flow: \$184,000

Asking Price: \$450,000
Contact: Doug Pendleton



SOLD - Livery/Limo Company #15530

Middlesex County - Livery business established since the 70's providing competent & comfortable service to & from airports, destination locations such as proms, weddings, corporate events and funerals as well as entertainment venues.

Gross Revenue: \$278,000
Cash Flow: \$57,000

Asking Price: \$100,000
Contact: Jesse Ritz



SOLD - Middlesex County Unique Retail #15525

MA- Outstanding management & staff are in place at this very unique MA store which carries wine, beer, a full selection of liquor as well as specialty food items. Located in a very strong demographic community which has significant disposable income it enjoys a very high gross revenue margin.

Gross Revenue: \$1,401,832
Cash Flow: \$148,747

Asking Price: \$425,000
Contact: Ronald Ekstrom



SOLD - Hi-Quality Tooling Machine Shop #15529

Middlesex County - Small shop that makes hi-quality tooling. Their tools are used on lathes, screw machines and milling machines, serving many industries where boring a precise hole is critical. Other industries that use their tooling are automotive, medical products, spray nozzle and aerospace.

Gross Revenue: \$397,445
Cash Flow: \$60,380

Asking Price: \$225,000
Contact: Ron Ekstrom



SOLD - Excellent Location for Redevelopment #15459

Worcester County, MA - Multi-level, exterior drive in loading docks, 60+ parking spaces. 7 units with private access.

Gross Revenue: N/A
Cash Flow: N/A

Asking Price: \$409,000
Contact: Lori Jacobson

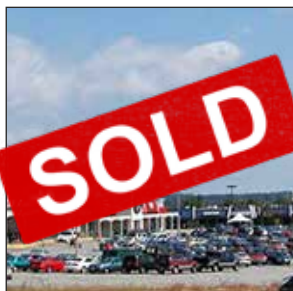


SOLD - Turnkey business location – Own the real estate #15435

Sturbridge, MA - Stand alone 3,700 sf renovated building on rte 20 in Sturbridge. This used to be the “Sweet Kiwi Frozen Yogurt”. Reopen the yogurt shop or put whatever you want in.

Gross Revenue: \$130,000
Cash Flow: TBD

Asking Price: \$450,000
Contact: Lori Jacobson



SOLD - One of NE’s Largest Hydroponic & Organic Growing Retail & Wholesalers #15493

New England - A retail and wholesale operation that sells Hydroponic products and systems.

Gross Revenue: \$6,000,000
Cash Flow: \$1,020,000

Asking Price: \$3,900,000
Contact: Chip Emerson



SOLD - “Old School” Music Shop #15506

Worcester County, MA - This music store is definitely “old school” offering sales, service & lessons from beginners on up. Our client is looking to retire after decades in the business. This is not a franchise, it is a regionally known and respected shop. Long-term fair market lease is offered.

Gross Revenue: \$688,712
Cash Flow: \$56,650

Asking Price: \$129,900
Contact: Jeff Lefebvre



**SOLD - Motivated Seller Precision Metal Fabrication Sales
\$3.7M #15521**

Middlesex County - Company has a historical base of accounts, utilizes up-to-date technologies, very low client concentration levels, sales & management teams in place, and has excess capacity for growth.

Gross Revenue: \$3,700,000
Cash Flow: N/A

Asking Price: Offers Invited
Contact: Doug Pendleton



SOLD - Adult Day Program #15544

Middlesex County - Specializing in early to mid-stage dementia this non-medical residential home focuses on making lives better for participants as well as caregivers. Open Mon-Fri with a fully trained staff in place the owner does not work any shift hours. Well-established with discounted 1st year rent. Seller willing to finance 30% of purchase price.

Gross Revenue: \$321,316
Cash Flow: \$84,152

Asking Price: \$160,000
Contact: Ron Ekstrom



SOLD - RARE Bank Financing / Breakfast & Lunch #15388

Worcester County - Landmark Breakfast & Lunch very busy 7 days per week. Consistent Success 10+ years. Averages \$10,000 per week. Full staffed with stand-alone building & parking (lease or purchase Real Estate).

Gross Revenue: \$480,000
Cash Flow: \$120,000

Asking Price: \$225,000
Contact: Lori Jacobson



SOLD - Butcher Shop & Deli Combo #15429

Middlesex County, MA - This Butcher Shop/Deli has been serving their loyal customers for over 15 years! Located in the desirable Middlesex County with an average of 20,000 cars passing by daily.

Gross Revenue: \$700,000
Cash Flow: \$100,000

Asking Price: \$109,000
Contact: Lori Jacobson



SOLD - Salon - Sales OVER \$600,000 #15488

Middlesex County, MA - This stylish salon offers 5 Chairs / 7 Stylists in desirable Middlesex County. Completely turn-key in a great location; you can lease the 2,390 square foot space or purchase the real estate.

Gross Revenue: \$600,000
Cash Flow: \$110,000

Asking Price: \$129,000 Plus RE
Contact: Lori Jacobson



SOLD - Property Tax Abatement Service Business #15557

Worcester County, MA - Established, Well-Known, Respected & Successful. Our client is willing to train a new owner & is offering some financing for a well-qualified buyer. Independent administrator, bookkeeper and associated Law Firm are in place. Home Based / Relocatable. Great opportunity & growth potential. Extensive contracted client list.

Gross Revenue: \$150,000
Cash Flow: \$50,000

Asking Price: \$200,000
Contact: Phil Dotten



SOLD - Price Reduced! Own Your Own Favorite Bar In Worcester! #15438

Worcester, MA - High Traffic, Full Pouring License, 200+ Occupancy, Open 4 Nights/Week & Closed During the Summer, Tons of Potential for Growth.

Gross Revenue: \$300,000
Cash Flow: \$107,000

Asking Price: \$129,000
Contact: Lori Jacobson



SOLD - \$259K Includes: Building, Land & All Equipment #15497

Worcester County, MA - Be your own boss and run your own childcare education center. The asking price includes the ownership of the building, land, and all equipment necessary to run this business successfully.

Gross Revenue: \$300,000
Cash Flow: \$89,000

Asking Price: \$259,900
Contact: Chip Emerson

Fence & Deck Sales / Installation – New England Seacoast. Sales \$1.5 Management & Sub-Contractors in place.

CT Golf – 5,000 sq. ft. Club House, Pro-Shop, 9-hole course on 100+ scenic acres

State-of-the-Art CNC Machining – Established, high-end machining. Client base Aerospace, Government, and Military. Revenue: \$1,030,326; Asking: \$1,050,000

Restaurant Equipment Dealer – Kitchen, bar, and dining equip. & furniture. All major brands. CAD software design expertise. Gross Sales \$4M Cash Flow \$380k Asking \$1.5M including \$300k of inventory

Turn-Key Commercial Greenhouse Operation – 14 Acre property with automated Greenhouse. Land, Commercial Greenhouse, Residential Home Asking \$1.4M

Unique Family Friendly Nature Space – Western MA 18,000 sf facility on 5 acres. Gross Sales: \$1.5M Cash Flow: \$400k Asking \$3,950,000 includes business, inventory, FF&E and RE

Niche Manufacturing Business – Located near Boston, MA. Management in place. Gross Revenue: \$10.7M Cash Flow: \$2.5M The Enterprise value is in the range of \$10 Million. **LOI**

Garden Center with Real Estate – Located in Central MA. Farm, Pet, Lawn & Garden needs for 30+ years. 8,240 sf retail & warehouse on 4+ acres. Gross Revenue: \$1,986,665 Cash Flow: \$307,320 Asking \$749,000 Real Estate additional \$675,000.

Foundation Business – Established business with equipment & staff in place. Gross Sales: \$1,4M Cash Flow: \$325,000 Offers will be reviewed.

Abbreviation Key

P – Pending client, we are waiting for additional documentation

LOI – The company has entered into a letter of intent. We are unable to disclose any information.

B – Exclusive buy-side client seeking acquisitions

EBITDA – Earnings before interest, taxes, depreciation & amortization

SDE – Seller's discretionary earnings

M – Million

K - Thousand