

# GEORGE & COMPANY

THE REGION'S PREMIER  
BUSINESS BROKERAGE FIRM

## MAIN STREET & MIDDLE MARKET LISTINGS



508-753-1400 | [info@georgeandco.com](mailto:info@georgeandco.com) | [www.georgeandco.com](http://www.georgeandco.com)

January 2019



## **New England Restaurant Nestled in Worcester County #15578**

**Worcester County, MA** - Charming, New England Restaurant on 7+ acres. This restaurant has been restored/updated and is 100% handicap accessible. Seating for up to 300 guests, multiple dining / function rooms that can accommodate groups of just about any size. Waiting areas, bar & lounge area with stone fireplace and a 26 ft. cooking line.

**Gross Revenue:** \$1,500,000

**Cash Flow:** \$175,000

**Asking Price:** \$875,000

**Contact:** Lori Jacobson

---



## **Environmental Service Business #15576**

**Worcester County, MA** - Non-Hazardous - Storm Drain Cleaning & Maintenance. Recession Resistant Business. Long-Term Clients. Industry Backlog For Service. Unlimited Growth Potential. Industry Experience Beneficial But Not Required. Seller Will Assist in Training & Transition.

**Gross Revenue:** \$472,000

**Cash Flow:** 198,000

**Asking Price:** \$600,000

**Contact:** Doug Pendleton

---



## **Meal Supplement Store with Protein Shakes To Go #15577**

**Worcester County, MA** - Be your own boss with the Meal Supplement Store with a Protein Shake Bar in a great Worcester County location next to a very busy gym. Store is open 50 hours per week - good for owner/operator. Reasonable rent. Great Growth Potential. Approximate Sales \$88,000.

**Gross Revenue:** \$88,000

**Cash Flow:** N/A

**Asking Price:** \$48,000

**Contact:** Manuela Gauthier

---



## **Killington VT Premiere Ski & Snowboard Shop #15473**

**Rutland County, VT** - We are offering for sale, a well-established, award winning, nationally recognized, Sports Retail & E-Commerce Business, right in the center of all this year-round action.

**Gross Revenue:** \$1,500,000

**Cash Flow:** \$250,000

**Asking Price:** \$499,000

**Contact:** Kristofer Soderlund

---



## **Catering Company Worcester County #15552**

**Worcester County, MA** - Great opportunity whether you are just starting out in catering or looking to expand an existing business. This Caterer has been in the business since the 80's providing an affordable menu for corporate & casual functions. There is such great growth potential that could easily double sales.

**Gross Revenue:** \$400,000

**Cash Flow:** \$100,000

**Asking Price:** \$149,000

**Contact:** Manuela Gauthier



### **Cafe & So Much More in Plymouth County #15573**

**Plymouth County, MA** - Serving breakfast & lunch, coffee all day as well as craft beer & wine and merchandise. Fully renovated in 2014, this cafe has a recurring customer rate of 58%. Located in a desirable location with a great long-term lease. With all that is offered there is still room for growth and make it your own.

**Gross Revenue:** \$521,149  
**Cash Flow:** \$98,113

**Asking Price:** \$277,000  
**Contact:** Myles McAlpine

---



### **Convenience Store with Deli & Lottery in Bristol County #15572**

**Bristol County, MA** - Convenience Store / Deli / Lottery Store established 65+ years offering grocery, lottery, tobacco, salads, fresh subs and deli meat. Long-term lease available with affordable rent. High foot & vehicle traffic. 2018 approximate sales of \$225,000. Owner moving and motivated!

**Gross Revenue:** \$173,000  
**Cash Flow:** N/A

**Asking Price:** \$105,000  
**Contact:** Myles McAlpine

---



### **Not Your same ole, same ole Liquor Store #15571**

**Worcester County, MA** - This family owned & operated business is proud of their successes & offers a great opportunity to a new owner. Rural location, no other stores within 6 miles. Opportunities exist for growth. Destination spot for Friday night gatherings. Perfect business for family to operate.

**Gross Revenue:** \$400,000  
**Cash Flow:** N/A

**Asking Price:** \$230,000  
**Contact:** Chip Emerson

---



### **Debt Collection Law Firm #15568**

**Worcester County, MA** - A prestigious firm that has assisted many commercial, retail, medical and professional clients with all aspects of debt collection. Included in the asking price is the 2,300 s.f. office/condo, with 11 private offices, common area with work stations, conference room and kitchenette.

**Gross Revenue:** \$3,500,000  
**Cash Flow:** \$417,000

**Asking Price:** \$1,200,000  
**Contact:** TBD

---



### **Long Established Restaurant Equipment Dealer #15564**

**Worcester County, MA** - Centrally located in the metro-west area. Belongs to a major restaurant equipment buying group and has a loyal customer base located through-out the New England area. Turnkey and located in a 30,000 s.f. facility which includes a 10,000 s.f. showroom of equipment and supplies. Their extensive inventory is included in the asking price.

**Gross Revenue:** \$4,050,451  
**Cash Flow:** \$288,340

**Asking Price:** \$1,400,000  
**Contact:** Jeff Lefebvre



### **Pet Grooming Well-Established & Profitable #15567**

**Worcester County, MA** - Full service, breed specific bathing & grooming. Great reputation for quality service with a loyal customer base. Expansion opportunity. Real Estate is being offered for an additional amount of \$115,000

**Gross Revenue:** \$90,557  
**Cash Flow:** \$73,126

**Asking Price:** \$85,000  
**Contact:** Manuela Gauthier

---



### **Be Your Own Boss - Valuing Assets Business - Relocatable #15566**

**Worcester County, MA** - This is a relocatable / work at home business. Appraisals of personal property, equipment, inventory. Seller is willing to train! Projected 2018 Sales is \$130,000. Projected 2018 Cash Flow is \$91,500.

**Gross Revenue:** \$130,000  
**Cash Flow:** \$91,500

**Asking Price:** \$250,000  
**Contact:** Phil Dotten

---



### **Discount Retail Store – Price Drop – Central MA #15366**

**Central MA** - Discount Retail Store that carries a wide range of inexpensive items – brand name & private label – for your car, pet, household, personal care.

**Gross Revenue:** \$220,000  
**Cash Flow:** \$75,000

**Asking Price:** \$79,000  
**Contact:** Lori Jacobson

---



### **Juice Bar / Growing Trend #15562**

**Providence County, RI** - Here is a great opportunity to get into a rapidly growing franchise. Everyone is striving to lead healthy lifestyles, be part of the trend and offer consumers products that highly benefits them! No Royalties / Great Social Following

**Gross Revenue:** \$200,000  
**Cash Flow:** TBD

**Asking Price:** \$75,000  
**Contact:** Myles McAlpine

---



### **NH Pizza, Roast Beef & Sub Shop #15558**

**Hillsborough County, NH** - This NY Style Pizza, Roast Beef and Sub Shop is in a high traffic, desirable location with plenty of free parking in Hillsborough County, NH. Averaging an estimated \$18,000 to \$20,000 per week in a clean, updated decor with seating for 30.

**Gross Revenue:** \$1,040,000  
**Cash Flow:** TBD

**Asking Price:** \$325,000  
**Contact:** Ray Shaw



### **Property Tax Abatement Service Business #15557**

**Worcester County, MA** - Established, Well-Known, Respected & Successful. Our client is willing to train a new owner & is offering some financing for a well-qualified buyer. Independent administrator, bookkeeper and associated Law Firm are in place. Home Based / Relocatable. Great opportunity & growth potential. Extensive contracted client list.

**Gross Revenue:** \$150,000  
**Cash Flow:** \$50,000

**Asking Price:** \$200,000  
**Contact:** Phil Dotten

---



### **Commercial Greenhouse / Farm & Residential Home In New England #15554**

**New England** - The current owners have invested over \$2M in the purchase of the 12+ acre property including many updates, renovations and automation to both the house, greenhouse and farm.

**Gross Revenue:** N/A  
**Cash Flow:** N/A

**Asking Price:** \$1,599,000  
**Contact:** Lori Jacobson

---



### **Looking for Pizza in Great City Location? Here it is! #15555**

**Worcester, MA** - Grow with the city! High traffic area! Established Worcester Pizza, long-term leased stand-alone building with own off street parking. Estimated Gross Revenue \$356,000.

**Gross Revenue:** \$356,000  
**Cash Flow:** TBD

**Asking Price:** \$129,000  
**Contact:** Manuela Gauthier

---



### **Pizza in Norfolk County Great Numbers #15556**

**Norfolk County, MA** - This business been successfully operating in the Norfolk County area for 3 years under present owners, but has been an established pizza restaurant since 2005. They serve a variety of pizzas, grinders, wraps, calzones, chicken, salads, dinners and appetizers. They offer the choice of dining-in, take out, delivery and catering services.

**Gross Revenue:** \$737,249  
**Cash Flow:** N/A

**Asking Price:** \$310,000  
**Contact:** Myles McAlpine

---



### **Lumber & Home Building Supply #15539**

**Grafton County, NH** - Established for over 15 years, well-known and respected for their huge selection of building materials, salvage items & discontinued items. FF&E includes racking, store shelving, office equipment as well as boom truck, box truck, 3 flatbed trucks and 4 forklifts.

**Gross Revenue:** \$1,500,000  
**Cash Flow:** \$144,000

**Asking Price:** \$399,000  
**Contact:** Phil Dotten

---



## **Health & Wellness / Massage & Spa in Western MA #15503**

**Hampshire County, MA** - Beautifully renovated this Spa screams "Relaxation". Infrared Saunas, Steam Rooms with Aromatherapy, numerous private state-of-the-art tub rooms, Therapeutic Massage, Facials and Reiki. Known for their excellent reputation, professionalism and great staff of dedicated, experienced and licensed personnel.

**Gross Revenue:** \$950,117

**Cash Flow:** \$253,000

**Asking Price:** \$995,000

**Contact:** Craig Miller

---



## **Landscape & Construction Related Business #15551**

**Worcester County** - Seller has worked part-time in this business. Recurring revenues for supplies & service. Leads are generated by word of mouth and vendors. Training & transition available from Seller

**Gross Revenue:** \$553,789

**Cash Flow:** \$120,000

**Asking Price:** \$280,000

**Contact:** Doug Pendleton

---



## **State-of-the-Art CNC Machining #15550**

**Hampshire County** - Hi-end machining for a client base involving aerospace, government work, military contractors and other large industrial companies. They have a very experienced staff and machinery that is recent, updated and relevant to deliver results others can't. There is capability to expand to another structure on the property and more than double production.

**Gross Revenue:** \$1,030,326

**Cash Flow:** \$207,226

**Asking Price:** \$1,050,000

**Contact:** Ron Ekstrom

---



## **Pizza - Worc. County - Average \$12k per week - Motivated Seller #15549**

**Worcester County** - Eat In, Take Out, Delivery. College within walking distance. Average weekly sales \$12,000. Reasonable, renewable lease. Stand-Alone building with own off-street parking. Does catering. This has everything in place to be a GREAT MONEY MAKER

**Gross Revenue:** \$650,000

**Cash Flow:** N/A

**Asking Price:** \$200,000

**Contact:** Jesse Ritz

---



## **Established Bakery Staff In Place #15546**

**Worcester County** - This landmark bakery / deli has been in Worcester County for 50 years! Great opportunity to build upon the name/brand and take this business as far as you want. A full staff of bakers, decorators, pastry, sales/counter staff, as well as management are in place and ready to continue to do what they do best!

**Gross Revenue:** \$1,059,542

**Cash Flow:** \$175,827

**Asking Price:** \$450,000

**Contact:** Ron Ekstrom

---



## **Cabinet Specialists: Design/Retail/Installation #15545**

**Worcester County** - Established Cabinet specialists providing custom re-facing and new cabinets since 1987 throughout New England. Complete service including design, retail, installation. Showroom offers extensive collection of cabinetry, counter tops, tiles, sinks, faucets and hardware. The real property showroom and office will be sold with the business.

**Gross Revenue:** \$591,535

**Asking Price:** \$175,000

**Cash Flow:** \$132,018

**Contact:** Jeff Lefebvre



## **Machining Job Shop serving Blow Mold Industry #15547**

**Worcester County** - Independently owned & operated business that specializes in services supporting the Plastics Industry. A solid platform that a buyer can expand. Employees in place that manage the day-to-day operations. Seller willing to train & help transition the business, industry experience is helpful but, not mandatory.

**Gross Revenue:** \$739,000

**Asking Price:** \$600,000

**Cash Flow:** \$186,000

**Contact:** Doug Pendleton



## **State-Of-The-Art Fitness Center #15542**

**Essex County** - Our client has completed the dream fitness center in Essex County and now is ready to retire. This fitness center has it all from free weights to the best machines to all types of classes to personal training. Great, trained staff is in place. This fitness center is ready to run with a new owner!

**Gross Revenue:** \$653,899

**Asking Price:** \$399,000

**Cash Flow:** \$92,471

**Contact:** Ron Ekstrom



## **Residential HVAC Business #15540**

**Norfolk County** - This HVAC business has been serving their 4,000 clients for 25+ years. Management and Team is in place so industry experience is helpful but not required. SBA financing possible with as little down as \$100k. Over 60% is Warranty & Service. Seller is willing to train & help transition the business.

**Gross Revenue:** \$2,100,000

**Asking Price:** \$1,800,000

**Cash Flow:** \$523,000

**Contact:** Doug Pendleton



## **Own A Fitness Center for \$89,000 #15536**

**Worcester, MA** - If you work out daily, are a people person, enjoy challenges & love to help people achieve their goals. Furniture/Fixtures/Equipment is included in asking price. 2,300 sf renovated, leased city location with parking. 8+ part-time trainers in place. Loyal clients & space to grow.

**Gross Revenue:** \$165,000

**Asking Price:** \$89,000

**Cash Flow:** \$55,000+/-

**Contact:** Lori Jacobson



## Fence/Deck Sales/Installations #15460

**NH** - Well-Established Commercial & Residential. Fence/Deck Sales & Installation. Great Opportunity - Serving MA & NH Seacoast. Sales Growth Every Year Since 2014. 2 Strategically Placed Locations. Management - Team - Sub Contractors & Equipment IN PLACE

**Gross Revenue:** \$1,800,000  
**Cash Flow:** \$250,000

**Asking Price:** \$399,000  
**Contact:** Ray Shaw



## Not a Big Box Lawn/Garden Power Equipment Store #15534

**Middlesex County** - This is a full-service power equipment shop, sales and service of lawn mowers, snow blowers, saws, as well as other misc. lawn & garden equipment. Great location on a main road, Seller is offering a long-term lease with possibly some seller financing for a well-qualified buyer.

**Gross Revenue:** \$1,250,000  
**Cash Flow:** \$170,000

**Asking Price:** \$350,000  
**Contact:** Lori Jacobson



## Highly Successful, Independently Owned Mail Centers #15538

**Worcester County** - Established family owned business - not a franchise Pack & Ship, Printing & Graphics, Business & Home Office, Mailboxes 4 locations with long-term leases. Seller will provide a license agreement for the use of the Brand, Trademarked Logo & Website at each location.

**Gross Revenue:** \$1,637,000  
**Cash Flow:** \$367,000

**Asking Price:** \$990,000  
**Contact:** Tim Cavan

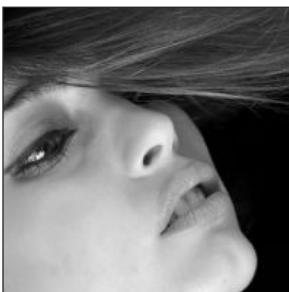


## Major Growth Potential #15533

**Middlesex County** - From ice-cream to full restaurant. This seasonal ice-cream stand in a great location can easily be transformed into a fantastic year-round restaurant. Bring your ideas & make your own!  
Fast Food / Breakfast & Lunch

**Gross Revenue:** \$150,000  
**Cash Flow:** \$25,000

**Asking Price:** \$79,000  
**Contact:** Lori Jacobson



## Northern Worcester County Hair Salon #15532

**Northern Worcester County** - Part-time STYLIST working owner profit \$115,000 +/- or bring your management/marketing skills to this fully staffed, well run operation. Upscale 1,296 sf long-term leased plaza location. 8 styling chairs, manicure/pedicure stations, product displays/waiting area. Hair / Nails / Special Occasions.

**Gross Revenue:** \$500,000  
**Cash Flow:** \$115,000

**Asking Price:** \$189,000  
**Contact:** Lori Jacobson





### **Flag Poles & Signs Sales/Installation/Maintenance #15531**

**Middlesex County** - This profitable sign and flag pole business sells, installs and services only the leading products for their diverse client base of both residential and commercial customers. The owner of over 25 years currently operates this business out of his home and has proven to be of the top in its market.

**Gross Revenue:** \$306,801  
**Cash Flow:** \$245,506

**Asking Price:** \$320,000  
**Contact:** Kristofer Soderlund

---



### **Golf, Restaurant, Banquet #15476**

**CT** - 117 Acres in Beautiful CT. Newer Construction of 5,300 sf Club-House. Additional Pro-Shop, Practice Range, Bar & Restaurant, Course Improvements. Possibly some Seller financing available.

**Gross Revenue:** \$700,000  
**Cash Flow:** N/A

**Asking Price:** Offers Invited  
**Contact:** Craig Miller

---

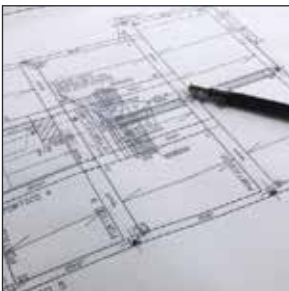


### **Great Opportunity – Everything Included #15523**

**Worcester County** - Our client wishes to retire and is including the real estate as well as all equipment & inventory of his Painting & Wallpapering Co. This could be a great investment for a current painter or for anyone that is looking to be their own boss.

**Asking Price:** \$199,000 Includes building, land, inventory & equipment  
**Contact:** Jesse Ritz

---



### **Buy it for the Business or Buy it for the Real Estate #15522**

**Worcester County** - Currently there is an operating garden center in this 6,000+ sf industrial building located on a 1.56 acre parcel of land! Steel building on a slab is expandable & dividable on a level lot with public water/sewer. Established in 1950's this building has a drive in door / loading dock and is classified as Commercial GB. Lot has 12 parking spaces.

**Gross Revenue:** \$596,000  
**Cash Flow:** \$70,000

**Asking Price:** \$99,000  
**Contact:** Jesse Ritz

---



### **A Store For All Seasons #15515**

**Worcester County** - This retail business has served Central MA homeowner's & farmer's alike with their Farm, Pet, Lawn & Garden needs for over 30 years. Community based with a broad knowledge of products. Continued growth and profitable sales. Mulch & wood pellet delivery. Lease/purchase 8,240 sf retail & warehouse space on 4+ acres

**Gross Revenue:** \$1,986,665  
**Cash Flow:** \$307,320

**Asking Price:** \$749,000  
**Contact:** Phil Dotten



## Middlesex County Italian Restaurant #15502

**Middlesex County** - Beautiful space consists of 4,000 sf on first floor which features. Full Bar, Dining Room, Open Kitchen & Rest Rooms, the basement houses offices & storage. Guest capacity of 130, full liquor license, and ample parking.

**Gross Revenue:** \$1,730,000  
**Cash Flow:** \$165,000

**Asking Price:** \$299,000  
**Contact:** Lori Jacobson

---



## Successful Tanning Salon in Worcester #15517

**Central MA** - In business for 12+ years this tanning salon offers:

- Top of the line equipment
- Numerous choices including beds, stand up, spray & airbrush
- Miscellaneous retail tanning and skin care products
- Great leased 1,500 s.f. stand-alone location with off-street parking

**Gross Revenue:** \$252,904  
**Cash Flow:** \$104,155

**Asking Price:** \$199,000  
**Contact:** Tim Cavan

---



## Hair Replacement/Restoration in New England #15511

**New England** - Serving clients throughout New England, our client has been in this business for almost 50 years and wishes to retire. Current owner owns the building and is offering a long-term lease for the 2,000-sf facility.

**Gross Revenue:** \$275,000  
**Cash Flow:** \$111,000

**Asking Price:** \$149,000  
**Contact:** Greg Lano

---



## Middlesex County Convenience Store \$99,000 #15425

**Middlesex County, MA** - Great opportunity to get into your own business. Nice small (800sf) convenience store in Middlesex County. Located on a well-traveled road this CV offers: lottery, coffee, tobacco products as well as misc. convenience items.

**Gross Revenue:** \$292,000  
**Cash Flow:** \$50,000

**Asking Price:** \$99,000  
**Contact:** Ray Shaw

---



## Fine Italian Dining in Worcester County #15452

**Central MA** - This remodeled Italian Restaurant has all the bells & whistles: exquisite finishes & furnishings, huge modern kitchen and a staff in place. 4,500 sf leased location with parking. Sales are approximately \$800k+. Great Opportunity!

**Gross Revenue:** \$780,000  
**Cash Flow:** \$129,850

**Asking Price:** \$225,000  
**Contact:** Lori Jacobson



## **Brick Oven Pizza Take Out & Delivery #15443**

**Hampden County, MA** - Western MA Pizza Business great lease & location for this take out & delivery only shop. Well-known and award winning this is a great opportunity with a great price and some possible seller financing. Must See!

**Gross Revenue:** \$277,887  
**Cash Flow:** \$84,898

**Asking Price:** \$100,000  
**Contact:** Craig Miller

---



## **UNDER AGREEMENT - Not Just A Pizza Place #15560**

**Worcester County, MA** - This casual restaurant offers a diverse menu and prepares meals from scratch giving their customers that "home made" appeal. Various pizza & grinders, burgers, wraps, salads and mac & cheese are all on the menu. Completely renovated inside and out. The real estate is being sold along with the business for an additional price.

**Gross Revenue:** \$952,206  
**Cash Flow:** \$152,017

**Asking Price:** \$195,000  
**Contact:** Ron Ekstrom

---



## **UNDER AGREEMENT - Childcare Center in Middlesex County #15543**

**Middlesex County** - Licensed for 39 children with a solid staff that has been there for years makes this a truly turn-key operation. Established & Respected in a great location that has quick and easy access for parents dropping off & picking up. This is an attractive daycare that you will want to take a look at - there is expansion ability if wanted.

**Gross Revenue:** \$365,996  
**Cash Flow:** \$57,884

**Asking Price:** \$139,000  
**Contact:** Ron Ekstrom

---



## **UNDER AGREEMENT - Absentee Run Child Daycare #15565**

**Plymouth County, MA** - This daycare is absolutely run absentee and is totally turn-key. Two directors lead this facility that is fully staffed with ownership spending not much more than 5 to 10 hours a month with reviewing reports or visiting the facility.

**Gross Revenue:** \$829,075  
**Cash Flow:** \$213,046

**Asking Price:** \$449,000  
**Contact:** Ron Ekstrom

---



## **UNDER AGREEMENT - Non-Medical Home Care Service #15494**

**MA** - Just the right size business offering customized high quality & compassionate care for the elderly and disabled for 11 years. Currently there are approximately 25 caregivers for the current service areas of Worcester & Middlesex County as well as south central New Hampshire.

**Gross Revenue:** \$548,485  
**Cash Flow:** \$148,551

**Asking Price:** \$345,000  
**Contact:** Jeff Lefebvre



## **UNDER AGREEMENT - Established Auto Repair in Worcester #15394**

**Worcester County** - Fully equipped shop does repairs, maintenance and inspection stickers. 3,489 sq. ft. with 5 bays & overheads. Seller owns building and will lease with option to buy. Being in the industry for 25+ years, Seller wishes to retire. Highly visible city location. National Franchise - Strong & growing market recognition & support.

**Gross Revenue:** \$750,566  
**Cash Flow:** \$94,084

**Asking Price:** \$229,000  
**Contact:** Jeff Lefebvre

---



## **UNDER AGREEMENT - Assisted Care Living Management & Staff in Place #15537**

**Central, MA** - Provides residents with a bed & breakfast like setting & atmosphere. Residents are supported 24-7 by medical management, direct care / daily living activities, and many other forms of day to day quality care administered and supervised by a highly skilled and trained staff.

**Gross Revenue:** \$1,180,000  
**Cash Flow:** \$624,000

**Asking Price:** \$4,000,000  
**Contact:** Chip Emerson

---



## **UNDER AGREEMENT - Licensed Provider of Medicare & Medicaid Home Care #15528**

**Worcester County** - Licensed providers of Medicare & Medicaid home care for the elderly, disabled and post-op clients primarily in Central MA. Approximately 40 employees, LPN's, Home Health Aids & Therapists. Great opportunity for an individual or an Investment Group.

**Gross Revenue:** \$1,688,049  
**Cash Flow:** \$370,840

**Asking Price:** \$1,200,000  
**Contact:** Jeff Lefebvre

---



## **UNDER AGREEMENT - Assisted Living - Great Business Opportunity #15541**

**Norfolk County** - You don't have to be in a Medical Profession to own! Easy to Run / Easy to Own. This beautiful, totally renovated assisted living home is located in suburban Massachusetts. Management is in place as well as a fully trained staff making this truly a turn-key opportunity.

**Gross Revenue:** \$1,059,532  
**Cash Flow:** \$417,101

**Asking Price:** \$1,995,000  
**Contact:** Ronald Ekstrom

---



## **UNDER AGREEMENT - Rapidly Growing Insulation Company #15535**

**Bristol County** - Residential & Commercial Insulation Installation Company. Incredible margins in a growing space that has no end in sight. Staff, Management & Equipment is all in place. Seller owns 3 companies. Company has potential to double or triple in volume with further investment in people and geographic expansion

**Gross Revenue:** \$3,900,000  
**Cash Flow:** \$1,512,942

**Asking Price:** \$4,500,000  
**Contact:** Ron Ekstrom



## **UNDER AGREEMENT - Utility Vehicle Workstations – Built to Order #15520**

**New England** - Our client takes delivery of all major OEM vehicles and custom builds them to client specifications making them ready to work vehicles. Positioned for explosive growth moving forward with \$12M in 2018 backlog & more PO's & commitments from recurring clients over the 30 yrs.

**Gross Revenue:** \$13,500,000  
**EBITDA:** \$2,560,000

**Asking Price:** Offers Invited  
**Contact:** Christopher George

---



## **UNDER AGREEMENT - CT Liquor Store Over \$2,100,000 In Sales! #15416**

**CT** - Located in a growing commercial area, Absentee run with management in place. Significant upside possible with the right experienced liquor retailer.

**Gross Revenue:** \$2,150,149  
**Cash Flow:** \$253,018

**Asking Price:** \$950,000  
**Contact:** Jeff Lefebvre

---



## **UNDER AGREEMENT - Custom Metal Fabricators - HVAC Industry #15500**

**Worcester County, MA** - Commercial & industrial centrally located, serving Central New England engineering, service, fabrication, and installation. Absentee owner. Building available for lease or purchase.

**Gross Revenue:** \$748,000  
**Cash Flow:** \$140,000

**Asking Price:** \$375,000  
**Contact:** Doug Pendleton

---



## **SOLD - Geotechnical & Environmental Drilling Company #15357**

**Worcester County** - New England company that are experts in geotechnical & environmental drilling. In business for 40+ years, great crew & large diversified equipment fleet. Sales 2M+. Make An Offer!

**Gross Revenue:** \$2,328,965  
**Cash Flow:** \$508,619

**Asking Price:** Offers invited  
**Contact:** Ron Kirwood

---



## **SOLD - Hi-Quality Tooling Machine Shop #15529**

**Middlesex County** - Small shop that makes hi-quality tooling. Their tools are used on lathes, screw machines and milling machines, serving many industries where boring a precise hole is critical. Other industries that use their tooling are automotive, medical products, spray nozzle and aerospace.

**Gross Revenue:** \$397,445  
**Cash Flow:** \$60,380

**Asking Price:** \$225,000  
**Contact:** Ron Ekstrom



**SOLD - Established & Profitable Restaurant #15509**

**Worcester County, MA** - Casual restaurant with full bar in northern Worcester County. Revenue - \$1M+ with Cashflow - \$100K+ consistent increases year after year. Seating for 24, ample parking and a great location. This restaurant receives great reviews on social media.

**Gross Revenue:** \$1,274,755  
**Cash Flow:** \$121,941

**Asking Price:** \$329,900  
**Contact:** Tim Cavan

---



**SOLD - Real Estate Appraisal #15524**

**Worcester County** - Profitable, stable business that specializes in residential real estate valuations for homeowners, RE brokers, financial institutions, government agencies, and attorney's. Can be relocated & operated from anywhere because the staff primarily works remotely. Currently in position to handle growth

**Gross Revenue:** \$742,000  
**Cash Flow:** \$184,000

**Asking Price:** \$450,000  
**Contact:** Doug Pendleton

---



**SOLD - Livery/Limo Company #15530**

**Middlesex County** - Livery business established since the 70's providing competent & comfortable service to & from airports, destination locations such as proms, weddings, corporate events and funerals as well as entertainment venues.

**Gross Revenue:** \$278,000  
**Cash Flow:** \$57,000

**Asking Price:** \$100,000  
**Contact:** Jesse Ritz

---



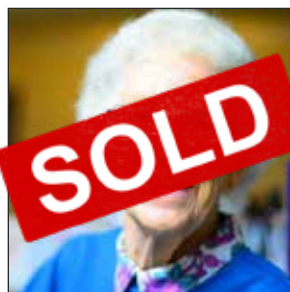
**SOLD - Middlesex County Unique Retail #15525**

**MA**- Outstanding management & staff are in place at this very unique MA store which carries wine, beer, a full selection of liquor as well as specialty food items. Located in a very strong demographic community which has significant disposable income it enjoys a very high gross revenue margin.

**Gross Revenue:** \$1,401,832  
**Cash Flow:** \$148,747

**Asking Price:** \$425,000  
**Contact:** Ronald Ekstrom

---



**SOLD - Adult Day Program #15544**

**Middlesex County** - Specializing in early to mid-stage dementia this non-medical residential home focuses on making lives better for participants as well as caregivers. Open Mon-Fri with a fully trained staff in place the owner does not work any shift hours. Well-established with discounted 1st year rent. Seller willing to finance 30% of purchase price.

**Gross Revenue:** \$321,316  
**Cash Flow:** \$84,152

**Asking Price:** \$160,000  
**Contact:** Ron Ekstrom



### **SOLD - Excellent location for redevelopment #15459**

**Worcester County, MA** - Multi-level, exterior drive in loading docks, 60+ parking spaces. 7 units with private access.

**Gross Revenue:** N/A  
**Cash Flow:** N/A

**Asking Price:** \$409,000  
**Contact:** Lori Jacobson

---



### **SOLD - Turnkey business location – Own the real estate #15435**

**Sturbridge, MA** - Stand alone 3,700 sf renovated building on rte 20 in Sturbridge. This used to be the “Sweet Kiwi Frozen Yogurt”. Reopen the yogurt shop or put whatever you want in.

**Gross Revenue:** \$130,000  
**Cash Flow:** TBD

**Asking Price:** \$450,000  
**Contact:** Lori Jacobson

---



### **SOLD - “Old School” Music Shop #15506**

**Worcester County, MA** - This music store is definitely “old school” offering sales, service & lessons from beginners on up. Our client is looking to retire after decades in the business. This is not a franchise, it is a regionally known and respected shop. Long-term fair market lease is offered.

**Gross Revenue:** \$688,712  
**Cash Flow:** \$56,650

**Asking Price:** \$129,900  
**Contact:** Jeff Lefebvre

---



### **SOLD - Motivated Seller Precision Metal Fabrication Sales \$3.7M #15521**

**Middlesex County** - Company has a historical base of accounts, utilizes up-to-date technologies, very low client concentration levels, sales & management teams in place, and has excess capacity for growth.

**Gross Revenue:** \$3,700,000  
**Cash Flow:** N/A

**Asking Price:** Offers Invited  
**Contact:** Doug Pendleton

---



### **SOLD - Price Reduced! Own Your Own Favorite Bar In Worcester! #15438**

**Worcester, MA** - High Traffic, Full Pouring License, 200+ Occupancy, Open 4 Nights/Week & Closed During the Summer, Tons of Potential for Growth.

**Gross Revenue:** \$300,000  
**Cash Flow:** \$107,000

**Asking Price:** \$129,000  
**Contact:** Lori Jacobson



**SOLD - RARE Bank Financing / Breakfast & Lunch #15388**

**Worcester County** - Landmark Breakfast & Lunch very busy 7 days per week. Consistent Success 10+ years. Averages \$10,000 per week. Full staffed with stand-alone building & parking (lease or purchase Real Estate).

**Gross Revenue:** \$480,000  
**Cash Flow:** \$120,000

**Asking Price:** \$225,000  
**Contact:** Lori Jacobson

---



**SOLD - One of NE's Largest Hydroponic & Organic Growing Retail & Wholesalers #15493**

**New England** - A retail and wholesale operation that sells Hydroponic products and systems.

**Gross Revenue:** \$6,000,000  
**Cash Flow:** \$1,020,000

**Asking Price:** \$3,900,000  
**Contact:** Chip Emerson

---



**SOLD - Butcher Shop & Deli Combo #15429**

**Middlesex County, MA** - This Butcher Shop/Deli has been serving their loyal customers for over 15 years! Located in the desirable Middlesex County with an average of 20,000 cars passing by daily.

**Gross Revenue:** \$700,000  
**Cash Flow:** \$100,000

**Asking Price:** \$109,000  
**Contact:** Lori Jacobson

---



**SOLD - Salon – Sales OVER \$600,000 #15488**

**Middlesex County, MA** - This stylish salon offers 5 Chairs / 7 Stylists in desirable Middlesex County. Completely turn-key in a great location; you can lease the 2,390 square foot space or purchase the real estate.

**Gross Revenue:** \$600,000  
**Cash Flow:** \$110,000

**Asking Price:** \$129,000 Plus RE  
**Contact:** Lori Jacobson

---



**SOLD - Successful Middlesex Garden Center #15474**

**Middlesex County, MA** - Plenty of Opportunity For Expansion! This well established business offers the community the finest garden center products.

**Gross Revenue:** \$800,000  
**Cash Flow:** \$88,500

**Asking Price:** \$299,000  
**Contact:** Phil Dotten





**SOLD - \$259K Includes: Building, Land & All Equipment  
#15497**

**Worcester County, MA** - Be your own boss and run your own childcare education center. The asking price includes the ownership of the building, land, and all equipment necessary to run this business successfully.

**Gross Revenue:** \$300,000  
**Cash Flow:** \$89,000

**Asking Price:** \$259,900  
**Contact:** Chip Emerson

---

# Larger Business Listings

as of 11/21/2018

**Rapidly Growing Killington VT:** Profitable sporting retail/ecommerce business on 7.7 developable acres.

**Fence & Deck Sales / Installation:** New England Seacoast. Sales \$1.5 Management & Sub-Contractors in place.

**Long-Term Residential Care Home:** Bed & Breakfast like setting in Central MA. Management & staff in place. 16,710 sf recently renovated. Revenues are in excess of \$1M earnings are \$624K. Business & property are offered at \$4M. LOI

**CT Golf:** 5,000 sq. ft. Club House, Pro-Shop, 9-hole course on 100+ scenic acres

**Licensed Medicare & Medicaid Home Care Services:** Providing a broad range of professional services for the elderly, disabled & post-op. patients in Central MA. LOI

**The Best Long-Term Care Operators:** Seeking Partner/Buyer. Looking to launch 2nd phase expansion that will bring total value of operation close to \$53M. Defined exit point, everything is in place.

**State-of-the-Art CNC Machining:** Established, high-end machining. Client base Aerospace, Government, and Military. Revenue: \$1,030,326; Asking: \$1,050,000

**Established HVAC Business: Gross Income:** \$2.1M Cash Flow: \$523k Management & Team in place. Over 4,000 repeat customers.

**Restaurant Equipment Dealer:** Kitchen, bar, and dining equip. & furniture. All major brands. CAD software design expertise. Gross Sales \$4M Cash Flow \$380k Asking \$1.5M including \$300k of inventory

**Turn-Key Commercial Greenhouse Operation:** 14 Acre property with automated Greenhouse. Land, Commercial Greenhouse, Residential Home Asking \$1.5M

**National Cold-Chain Logistics Co:** Well established, Explosive growth, specialized equipment.

*Coming Soon .....*

**Major Food Preparation “Wholesaler”:** services canteen trucks and vending companies. Gross Sales \$5M Cash Flow \$500K Asking \$1.2M

## Abbreviation Key

**P** – Pending client, we are waiting for additional documentation

**LOI** – The company has entered into a letter of intent. We are unable to disclose any information.

**B** – Exclusive buy-side client seeking acquisitions

**EBITDA** – Earnings before interest, taxes, depreciation & amortization

**SDE** – Seller’s discretionary earnings

**M** – Million

**K** - Thousand